

TBA FIREFLYTM

PASSIVE FIRE PROTECTION

TBA Textiles Pty Ltd

ABN: 30 161 422 359

Issue Date: 09/05/2022

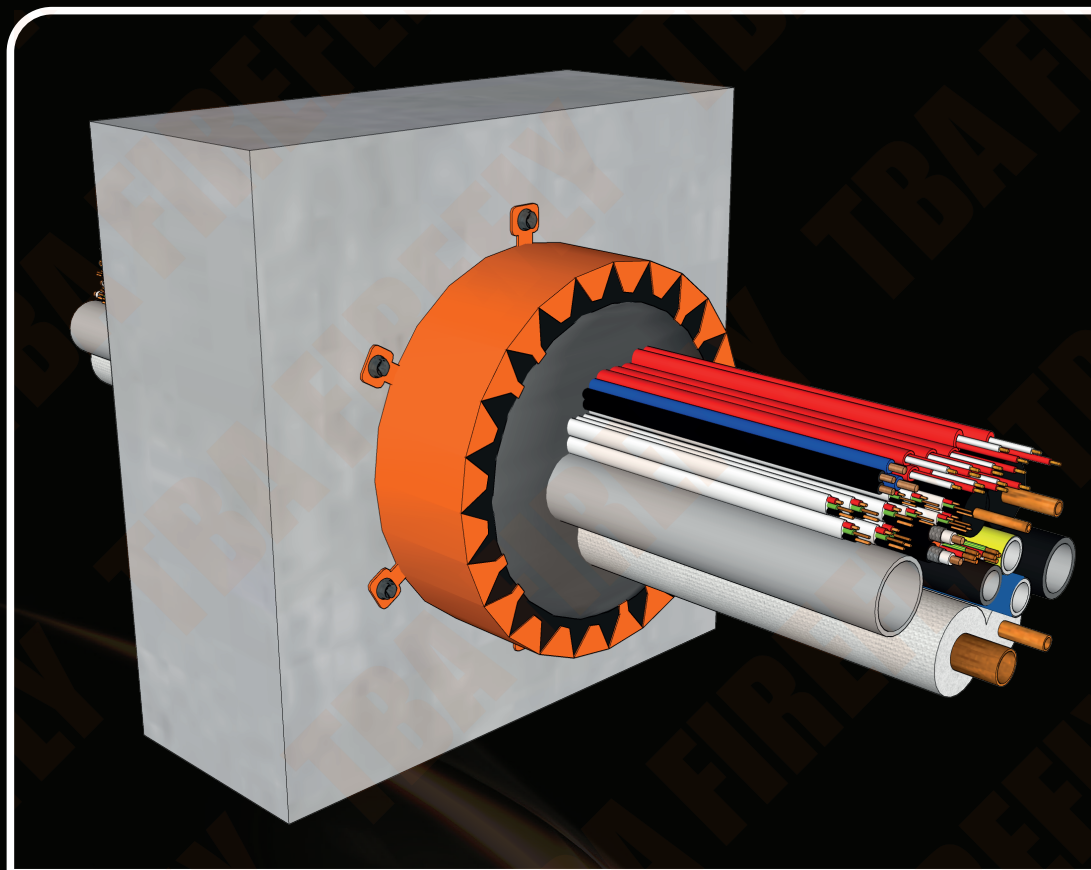
36

PHONE: (07) 5411 4209 (Option 2)

OR (02) 8004 3333 (Option 2)

WEBSITE: tbafirefly.com.au

EMAIL: sales@tbafirefly.com.au



CERTIFICATION

Tested in accordance with AS1530.4-2014

Assessed in accordance with AS4072.1-2005

Warringtonfire Report FAS190236 RIR ID No: V163

FRL -/120/120

TBA FIREFLYTM
MULTI-SERVICE FIRE COLLAR

May Contain Any One or All of These Services

- 1 x PEX Water Pipe (max' 25mm OD x 3.9mm WT)
 - 1 x PEX-a Pipe (max' 16mm OD x 2.4mm WT)
 - 1 x PEXa/AL/PEX Gas Pipe (max' 16mm OD x 2.5mm WT)
 - 1 x PEX/AL/PEX Gas Pipe (max' 16mm OD x 3mm WT)
 - 1 x 13mm WT Nitrile Rubber lagged 1/4" + 3/8" Copper Pair Coil
 - 1 x 10mm WT CLPE lagged 1/4" + 5/8" Copper Pair Coil
 - 6 x 1.5mm² TPS 2c+e (9.8mm x 4.4mm) Electrical Cables
 - 5 x 2.5mm² TPS 2c+e (12.5mm x 5.7mm) Electrical Cables
 - 2 x 0.75mm² 2c (9.7mm OD) Fire Alarm Cables
 - 6 x 1.5mm² 2c (6.9mm x 4.4mm) Fire Alarm Cables
 - 2 x 6mm² 3c+e (13mm OD) Orange Electrical Cables
 - 2 x CAT6 Data Cables
 - 2 x CAT5e Data Cables
 - 2 x RG6 Coaxial Cables
 - 1 x uPVC Pipe (max' 32mm OD x 2.4 WT)
- Clarification: WT denotes the maximum wall thickness of Pipes or Insulation

SUBSTRATE:

Min' 100mm thick Masonry, Concrete block or Hebel block wall. Capable of minimum FRL -/120/120.

INSTALLATION:

Drill a 150mm Core Hole. Run a 10mm bead of TBA FireflyTM Intumastic around the face of the core hole. Then install a TBA FireflyTM FRF 150 Fire Collar to both sides of the wall. Fixed using 6 x 40mm long M6 Masonry screws. Gaps around the services filled with TBA FireflyTM Intumastic HP to the full depth of the fire collars.