

PHONE: (07) 5411 4209 (Option 2)
OR (02) 8004 3333 (Option 2)

WEBSITE: tbafirefly.com.au
EMAIL: sales@tbafirefly.com.au

MATERIAL DESCRIPTION

A high density mineral fibre batt (180kg/m³ Fire Batt) factory coated on both faces to a precise thickness with a white durable fire resistant mastic.

CERTIFICATION

Tested in accordance with AS1530.4-2014
Assessed in accordance with AS4072.1-2005
Tested both Horizontally and Vertically
Warringtonfire Report No's:
FAS190234 RIR
FAS190235 RIR
FAS190236 RIR

CSIRO Report No:
FCO-3228 SFA Specific ID No S4b

DIMENSIONS

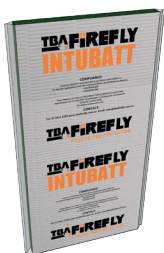
BATT
1200x600x50mm

FRL -/240/240

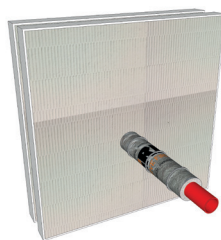
APPLICATIONS

Used to fire stop large holes in floors and walls with or without service penetrations. Also used as a linear gap seal up to 1200mm high x infinite length in walls and up to 600mm wide x infinite length in floors. Tested in accordance with AS1530.4-2014 and assessed in accordance with AS4072.1-2005. The TBA Firefly Intubatt[®] seals provide solutions for multiple service penetrations within various wall substrates (FR Plasterboard, Hebel Powerpanel, Pronto Panel, Speedpanel, Block & Masonry) and floor/ceiling substrates (Concrete, Masonry & FR Plasterboard). For specific applications and FRLs achieved please refer to the referenced Compliance Reports. Must be installed in strict accordance with the construction details contained within the Compliance Reports.

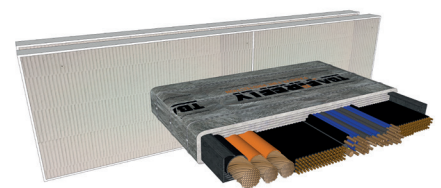
TBA FIREFLYTM
INTUBATT[®]



TBA FireflyTM Intubatt[®]



40mm Steel Sprinkler Pipe
Service Penetration Through
TBA FireflyTM Intubatt[®]



D1 Cables on Tray Service
Penetration Through
TBA FireflyTM Intubatt[®]